



Peebles HYDRO



Conferences, Meetings & Events

Innerleithen Road, Peebles EH45 8LX
Telephone: 01721 720 602 Fax: 01721 722 999
Email: conferences@peebleshydro.co.uk

To be a highly regarded venue for meetings, a hotel needs to be more than just a pretty face but don't just take our word for it

"Thank you for a most successful conference at Peebles Hydro. We have grown to anticipate the very best of service from your staff and were certainly not disappointed. From the moment I arrived to the moment I left your staff were most attentive and helpful. I very much look forward to our next conference at Peebles Hydro."

-The University of Edinburgh,

"I would just like to take this opportunity to thank you and your staff for the outstanding job you did prior to and during our second High Performance Conference. Once again we were very impressed with the high level of service and attention to detail that the Hydro afforded us. All delegates have nothing but praise for Peebles Hydro - its beautiful setting, quality service and articulate attention to detail and I am sure it is a venue we will continue to use in the future." - Scottish Institute of Sport

"On behalf of the committee and staff I would like to thank you and your staff for the excellent service provided throughout our stay. The accommodation and food were first class and contributed to a very productive two days for the Association." - Melville Housing

"Following the conference we sent a questionnaire to delegates and the feedback has been incredible – 79% gave the highest possible overall rating ... The Hydro, its management and staff far exceeded our expectations." - Angela Ham

"I write on behalf of the President and Council of the Association to express our sincere thanks to you and your team on the excellent service we received at this year's Congress. The courtesy of your staff, the food, accommodation and facilities for the business sessions were superb and always geared towards the comfort of our delegates and guests." - SSTA Annual Congress

"Thank you very much for the excellent service offered by yourself, your staff and your hotel for the duration of our conference. The service was excellent and the food also excellent. I received no complaints from anyone who attended the conference and the organising group found the staff and management to be very efficient" - Gayle Johnston, Analytical Services Group

"The conference was a great success and much of that due to the excellent organisation on the part of Peebles Hydro" - Jacki Swanston, Secondary Schools Manager

"I confess to struggling to find any negative comment that I could make. The assistance from your staff, attention to detail and requests for assistance with unforeseen technical difficulties were all dealt with promptly and efficiently. The whole experience is one we have come to expect from Peebles Hydro making our conference a memorable experience for those who attended." - Denis Lomax

"I am writing on behalf of the NTEA Region to express our gratitude for the immense amount of work your staff put in to keep our Conference running smoothly over the four days we were there. The amount of work that you did from 5.00pm Tuesday afternoon for the Gala Dinner Dance through to 8.30am Wednesday morning when the room was back as it was, was mind blowing. The organization of our coffee breaks and lunches in particular was excellent. The food was delicious, and not what we are used to at these events. Full marks to all concerned." - NFSP Conference

"Without your assistance and hard work our conference would not be the success it is. Which is the reason we return to Peebles Hydro year after year. Next year will be SHARE's 25th anniversary." - SHARE Conference

Special Offer Delegate Packages

Peebles HYDRO

SPECIAL OFFER on selected dates Nov-Feb 2012 ♦ 24 Hour Delegate ONLY £95.00 ♦ Day Delegate ONLY £25.00

Day Delegate Rate Includes:

TEA, COFFEE & BACON ROLLS ON ARRIVAL
MID MORNING & AFTERNOON TEA, COFFEE & PASTRIES OR BISCUITS
SOUP & SANDWICH LUNCH
FREE CAR PARKING
MEETING ROOM HIRE
MEETING ROOM EQUIPMENT

24 Hour Delegate Rate Includes:

TEA, COFFEE & BACON ROLLS ON ARRIVAL
MID MORNING AND AFTERNOON TEA, COFFEE & PASTRIES OR BISCUITS
SOUP & SANDWICH LUNCH
EN-SUITE ACCOMMODATION
4 COURSE DINNER
FULL SCOTTISH BREAKFAST
24 HOUR LEISURE CLUB MEMBERSHIP
FREE CAR PARKING
MEETING ROOM HIRE
MEETING ROOM EQUIPMENT

Conference Services

PHOTOCOPYING	ENTERTAINMENT
FAX	PHOTOGRAPHER
SECRETARIAL SERVICES	PIPER
LAUNDRY	SPA TREATMENTS
FLORAL DECORATIONS	GOLF
POSTAL & COURIER SERVICES	SPECIALIST EQUIPMENT

Please ask for a quotation for the above services.

Internet Access

High-speed internet access is available throughout the hotel.
Please contact our sales team for our Internet packages.

What's included in your meeting room?

LCD Projector ♦ Screen ♦ Flip Charts ♦ Notepad & Pens
TV ♦ DVD ♦ CD ♦ Lectern ♦ Jugs of Fresh Water ♦ Fruit Bowl

Other specialist equipment is available and must be requested in advance.

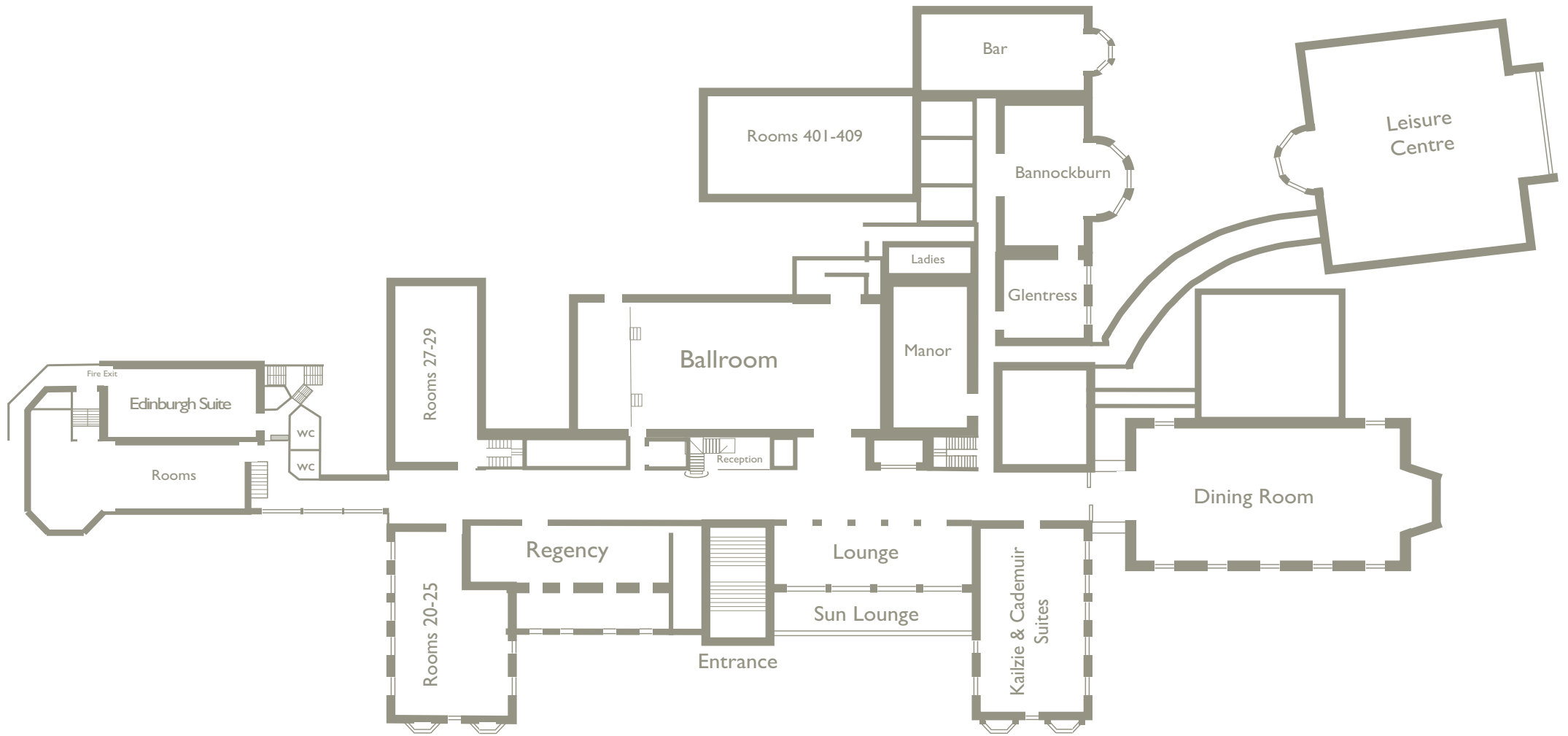
Rates available on request.

Quick Guide to Room Features

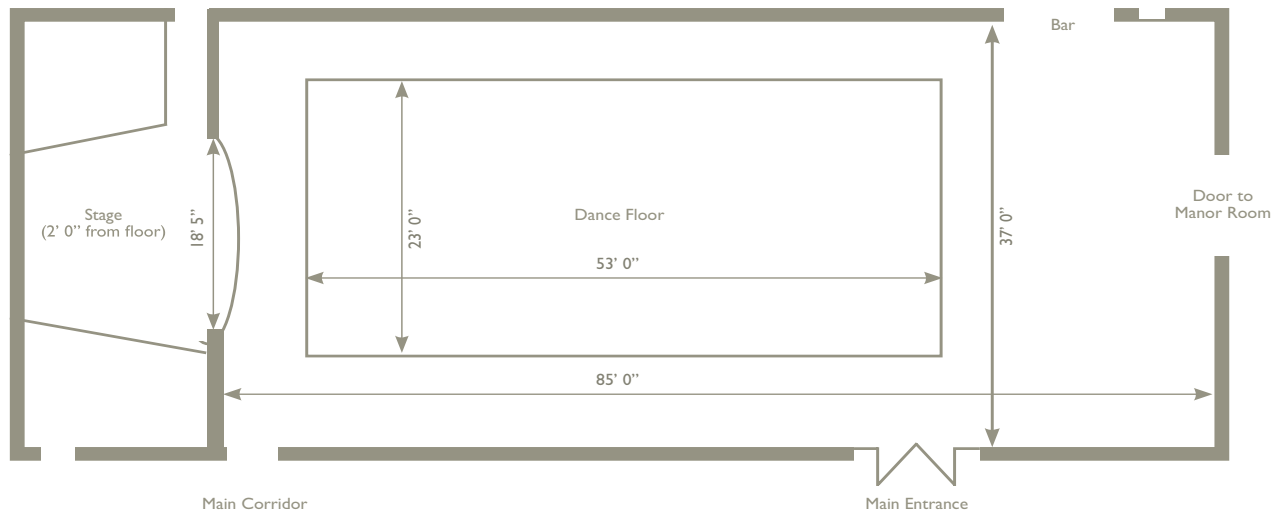
Room	Dimensions				Conferences		Service Meals		
	Length	Width	Area Available sq. ft. sq. m.	Height	Classroom	Theatre	Tables of 10	Top Table with Sprigs	One Large Table
Dining Room	76' 6" (23.3m)	39' 2" (11.9m)	2996 278	22' 0" (6.7m)	-	-	250	320	-
Ballroom	85' 0" (25.9m)	37' 0" (11.2m)	3145 292	25' 0" (7.6m)	200	450	230	250	74
Regency	57' 9" (17.6m)	18' 3" (5.5m)	1053 98	13' 0" (3.9m)	33	80	60	60	48
Bannockburn Bay Window	46' 8" (14.2m) 20' 3" (6.2m)	16' 9" (5.1m) 12' 6" (3.8m)	1034 96	14' 0" (4.3m) 14' 0" (4.3m)	48	90	70	70	48
Glentress	24' 9" (7.5m)	16' 9" (5.1m)	414 38	13' 0" (3.9m)	-	25	20	-	20
Manor	39' 9" (12.1m)	20' 8" (6.3m)	822 76	10' 6" (3.2m)	40	80	60	60	32
Edinburgh Suite	57' 9" (17.6m)	27' 9" (8.5m)	1602 149	11' 6" (3.5m)	85	175	110	120	54
Suite divided:									
Balmoral	33' 8" (10.2m)	27' 9" (8.5m)	934 87	11' 6" (3.5m)	44	80	70	66	32
Holyrood	23' 1" (7.0m)	27' 9" (8.5m)	641 60	11' 6" (3.5m)	33	60	40	44	24
Venlaw	40' 7" (12.3m)	21' 1" (6.4m)	858 80	10' 7" (3.2m)	40	80	-	-	-
Suite divided:									
North	22' 3" (6.8m)	21' 1" (6.4m)	471 44	10' 7" (3.2m)	20	40	-	-	-
South	18' 4" (5.6m)	21' 1" (6.4m)	389 36	10' 7" (3.2m)	-	30	-	-	-

maximum number of persons

Main Floor Plan



The Ballroom



A bright and spacious function room with double door entry from the main corridor and coffee lounge. In the centre of the room is a large wooden dance floor with a carpeted surround. An identical carpet is available to cover the dance floor if not required. At one end, there are double doors leading to the Manor room and at the other is a raised and curtained stage. The Ballroom has its own bar. The high vaulted ceiling is fully glazed but can be blacked out on request.

Dimensions

	length	width	height
Maximum	85' 0" (25.91m)	37' 0" (11.28m)	25' 0" (7.62m)
Minimum	85' 0" (25.91m)	37' 0" (11.28m)	18' 0" (5.49m)
Maximum Floor Area: 3145 sq. ft. (292.18 sq. m.)			

Capacities (maximum)

CONFERENCES		MEALS	
Theatre	450 + top	Round Tables of 10	210
Classroom	200 + top	One Large Table	74
Hollow Rectangle	102	Top Table + Sprigs	320
U-Shape	88	Dinner + Dance	210
Reception	350		

Access

Direct to outside	Yes, but limited access
Access door size	5' 0" x 7' 0" (1.60m x 2.14m)
Delegate access	From Hotel corridors and Manor Room

Lighting

Tungsten/Sodium	Both
Spotlights	On request
Controls in Room	Yes
Dimmers	Yes
Black-Out	Yes
Windows	Roof Windows (blacked out on request)

Sound

Sound system fitted	Yes, stereo
Number of speakers	4
Number of mic inputs	8
Number of line inputs	4
Mixing possible	Yes
Controls in room	Yes

Power

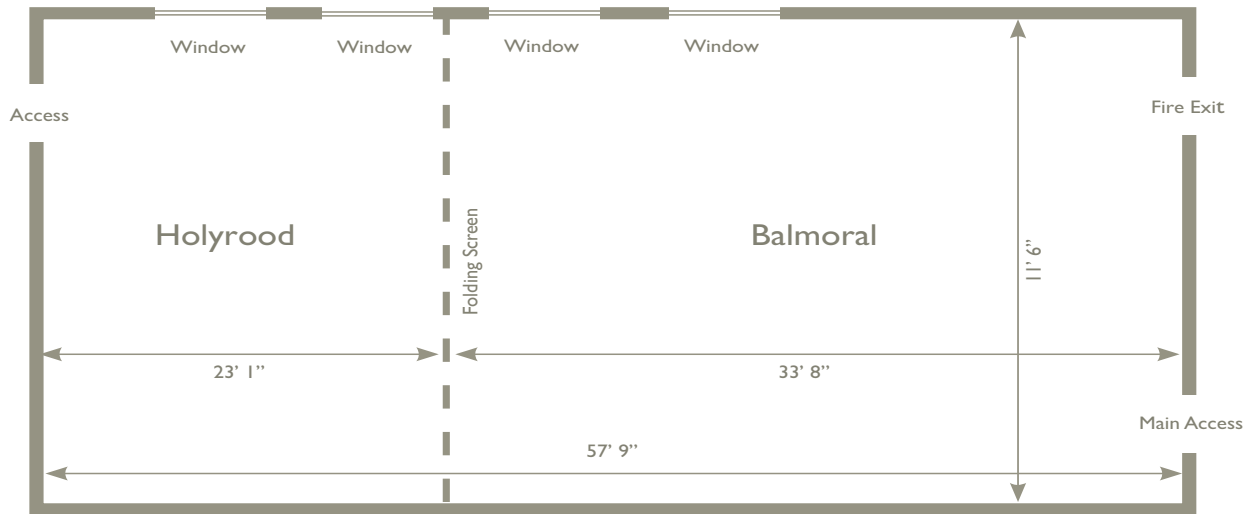
Number of 13 amp sockets	61
3-Phase available	Yes

Miscellaneous

Telephone points	9
Projection room	No
Exhibitions	Yes
Manor door	7' 0" high x 4' 7" (2.14m x 1.045)



The Edinburgh Suite



This well appointed conference suite is part of a newer extension to the hotel and is self-contained with various access points. The ceiling has downlighters and additional chandeliers. The Calazel can be divided by a partition wall into two rooms with separate access.

Dimensions

	length	width	height
Balmoral	33' 8" (10.27m)	27' 9" (8.46m)	11' 6" (3.5m)
Holyrood	23' 1" (7.04m)	27' 9" (8.46m)	11' 6" (3.5m)
Calazel	57' 9" (17.60m)	27' 9" (8.46 m)	11' 6" (3.5m)
Maximum Floor Area Traquair: 934 sq. ft. (86.8 sq. m.)			
Maximum Floor Area Neidpath: 641 sq. ft. (59.5 sq. m.)			
Maximum Floor Area Calazel: 1602 sq. ft. (148.8 sq. m.)			

Lighting

Tungsten/Fluorescent/Bulbs	Tungsten/Bulbs
Controls in Room	Yes
Dimmers	Yes
Black-Out	Yes
Windows	Yes

Power

	Balmoral	Holyrood	Edinburgh
No. 13 Amp Sockets	14	12	26
3-Phase	Yes	Yes	Yes

Capacities (maximum)

CONFERENCES	Balmoral	Holyrood	Edinburgh
Theatre	80	60	175
Classroom	44	33	85
Boardroom	32	24	54
Hollow Rectangle	54	42	70
U-Shape	43	31	60
MEALS			
Round Tables of 10	60	50	110
One Large Table	32	24	62
Top Table & Sprigs	60	38	90
Dinner & Dance	-	-	80
Reception	100	70	175

Access

	Yes	No	Yes
Direct to Outside	Yes	No	Yes
Access Door Size	4' 9" x 6' 8" (1.45m x 2.03m)	3' 8" x 6' 5" (1.12m x 1.96m)	4' 9" x 6' 8" (1.45m x 2.03m)
Delegate Access	All 3 from Hotel main corridors		

Sound

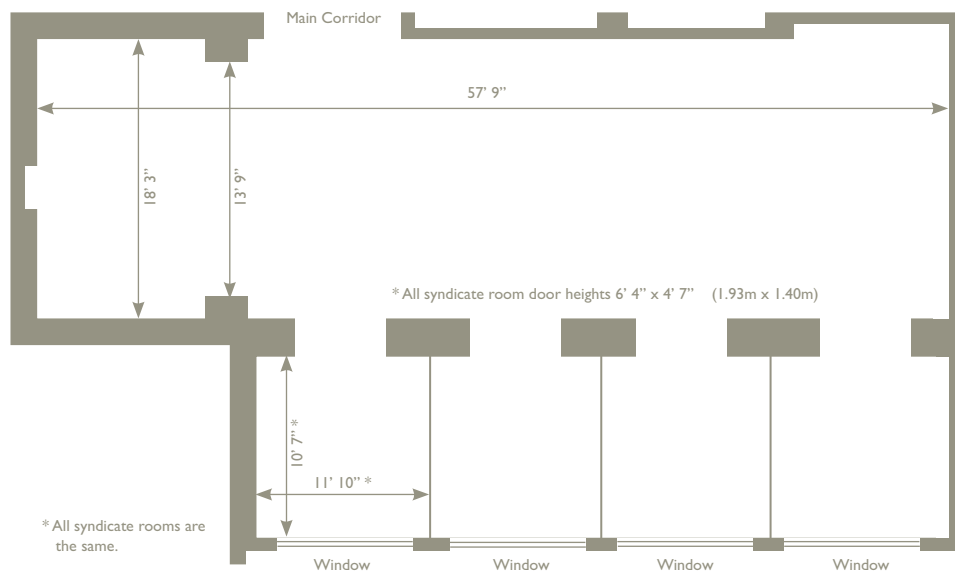
	Balmoral	Holyrood	Edinburgh
Sound System	Yes	Yes	Yes
Type	Stereo	Stereo	Stereo
No. of Speakers	4	4	8
No. of Mic Inputs	4	3	7
No. of Line Inputs	-	-	-
Mixing Possible	-	-	Yes
Controls in Room	-	-	Yes

Miscellaneous

Telephone Points	3	4	7
Projection Room	No	No	No
Exhibitions	Yes	Yes	Yes



The Regency



Decorated in the style to suit its name, this elegant room has panelled walls and high ceilings, lit by chandeliers.

There is direct access to the main corridor. Adjoining the main room are 4 south facing rooms with large windows overlooking the rolling countryside - ideal for syndicates or small workshops.



Dimensions

	length	width	height
Maximum	57' 9" (17.60m)	18' 3" (5.56m)	13' 0" (3.96m)
Minimum	57' 9" (17.60m)	13' 9" (4.19m)	10' 0" (3.05m)
Maximum Floor Area: 1053 sq. ft. (97.8 sq. m.)			

Also 4 Syndicate rooms measuring 11' 10" x 10' 7" (3.61m x 3.23m)

Capacities (maximum)

CONFERENCES		MEALS	
Theatre	80 + top	Round Tables of 10	60
Classroom	33 + top	One Large Table	48
Boardroom	48	Top Table + Sprigs	60
U-Shape	36 + top		
Reception	60		

Lighting

Fluorescent/Bulbs	Bulbs
Spotlights Fixed/Moveable	Fixed
Controls in Room	Yes
Dimmers	No
Black-Out	Yes
Windows	Yes

Sound

Sound system fitted	No, but available on request
Type	Stereo
Number of speakers	2
Number of mic inputs	5 (on amp)
Number of line inputs	1
Mixing possible	Yes
Controls in room	Yes

Power

Number of 13 amp sockets	19
3-Phase available	On request
Sun Lounges	7

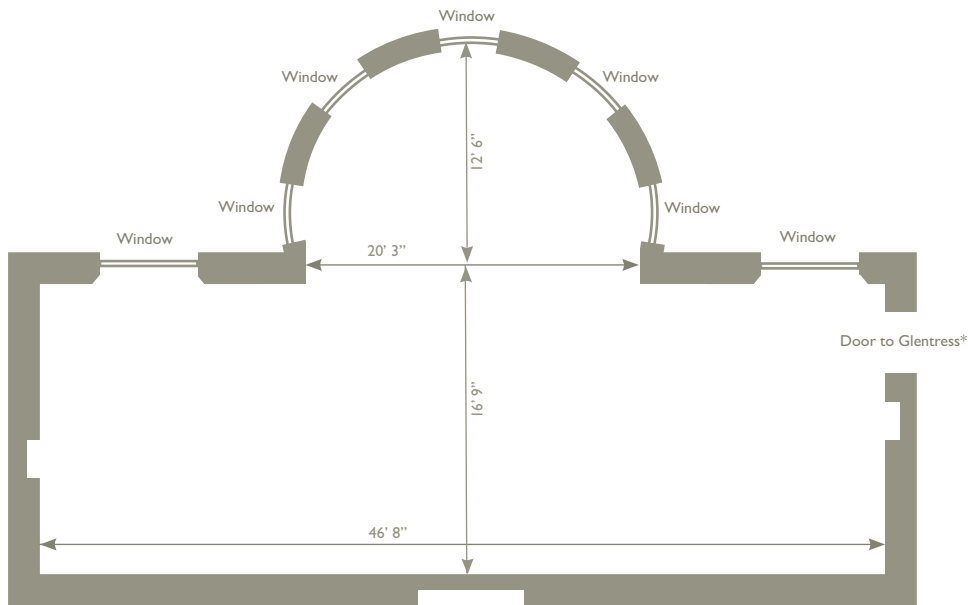
Access

Direct to outside	No
Access door size	2' 11" x 6' 9" (0.89m x 2.06m)
Delegate access	From Hotel main corridors

Miscellaneous

Telephone points	3
Projection room	No
Exhibitions	Yes

The Bannockburn



*The Glentress Room, 24'9" x 16' 9" (7.58m x 5.11m) is available as a syndicate room on request.

A striking room with double door access to the corridor and direct access to the Glentress. A unique, full height painted mural extends around the walls with a dramatic, well depicted representation of the Battle of Bannockburn in 1314. There is a high ceiling with chandeliers and a large fully curtained bay window.



Dimensions

	length	width	height
Maximum	46' 8" (14.22m)	16' 9" (5.11m)	14' 0" (7.62m)
Minimum	20' 3" (6.17m)	12' 6" (3.81m)	14' 0" (7.62m)
Maximum Floor Area: 1034 sq. ft. (96.06 sq. m.)			

Capacities (maximum)

CONFERENCES		MEALS	
Theatre	90 + top	Round Tables of 10	70
Classroom	48 + top	One Large Table	48
Boardroom	54	Top Table + Sprigs	68
Hollow Rectangle	54		
U-Shape	49		
Reception	100		

Lighting

Fluorescent/Bulbs
Controls in Room
Dimmers
Black-Out
Windows

Bulbs
Yes
Yes
Yes
Yes

Sound

Sound system fitted
Type
Number of speakers
Number of mic inputs
Number of line inputs
Mixing possible
Controls in room

No, but available on request
Stereo
2
5 (on amp)
1
Yes
Yes

Power

Number of 13 amp sockets
3-Phase available

11
On request

Access

Direct to outside
Access door size
Delegate access

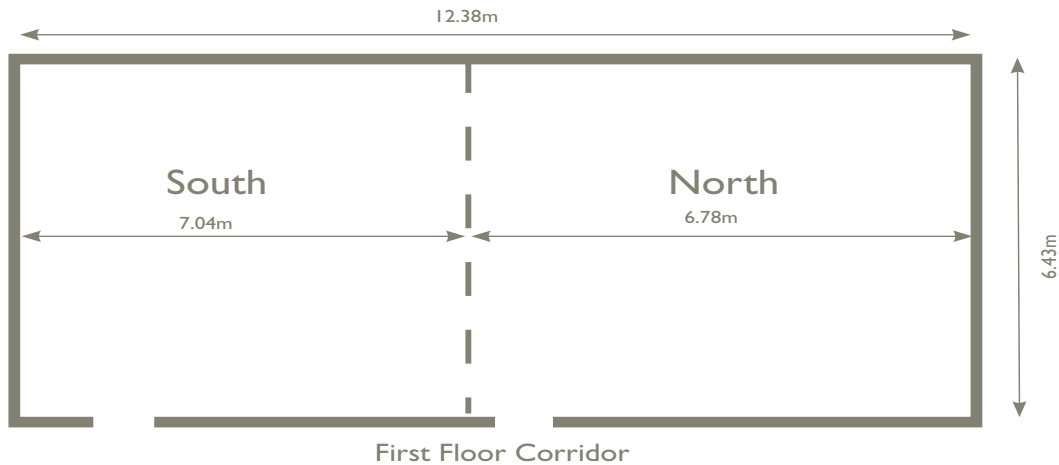
No
5' 5" x 7' 0" (1.65m x 2.14m)
From Hotel main corridors or from Glentress

Miscellaneous

Telephone points
Projection room
Exhibitions

1
No
Yes

The Venlaw



Directly above the Manor Room, the Venlaw is the only conference room above the main floor level. Decorated in the same style as the Manor; the room has no windows, but an efficient air conditioning/heating system. A solid, folding dividing wall can split the room into two similar sized rooms each with self-contained lighting, air conditioning controls and separate corridor access

Dimensions

	length	width	height
North	22' 3" (6.78m)	21' 1" (6.43m)	10' 7" (3.23m)
South	18' 4" (7.04m)	21' 1" (6.43m)	11' 6" (3.23m)
Venlaw	40' 7" (12.38m)	21' 1" (6.43m)	11' 6" (3.23m)
Maximum Floor Area North:	470.5 sq. ft. (43.7 sq. m.)		
Maximum Floor Area South:	388.2 sq. ft. (36.1 sq. m.)		
Maximum Floor Area Venlaw:	858.7 sq. ft. (79.8 sq. m.)		

Capacities (maximum)

CONFERENCES	North	South	Venlaw
Theatre	40	30	80
Classroom	20	-	40
Boardroom	14	12	32
Hollow Rectangle	20	18	38
U-Shape	15	13	32

Power

	North	South	Venlaw
No. 13 amp Sockets	10	9	19
3-Phase Available	on request	on request	on request

Lighting

	Tungsten/Fluorescent/Bulbs	Tungsten
Spotlights Fixed/Moveable		Fixed
Controls in Room		Yes
Dimmers		No
Black-Out		Yes
Windows		No

Sound

	North	South	Venlaw
Sound System	Yes	Yes	Yes
Type	Stereo	Stereo	Stereo
No. of Speakers	1	1	2
No. of Mic Inputs	4	2	6
No. of Line Inputs	1	-	1
Mixing Possible	-	-	Yes
Controls in Room	-	-	Yes

Access

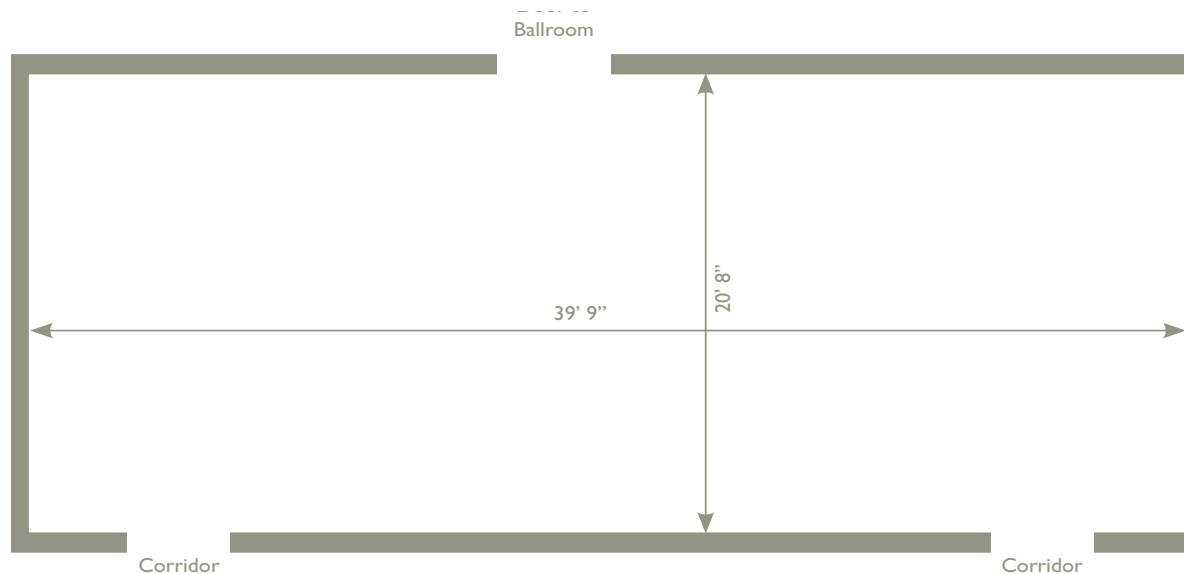
	North	South	Venlaw
Direct Access to Outside	No	No	No
Access Door Size	No (0.92m x 2.14m)	No (0.92m x 2.14m)	No (0.92m x 2.14m)
Delegate Access	All 3 from First Floor Corridor		

Miscellaneous

	North	South	Venlaw
Telephone Points	2	2	4
Projection Room	No	No	No
Delegate access	Yes	Yes	Yes



The Manor



Adjoining the Ballroom with access via sound proofed double doors, the Manor room has a lower ceiling with downlighters and two chandeliers. The room is decorated in Regency style with moulded panels. There are no windows, but instead, an efficient air conditioning and heating system.



Dimensions

	length	width	height
Maximum	39' 9" (12.12m)	20' 8" (6.30m)	10' 4" (3.15m)
Minimum	39' 9" (12.12m)	20' 8" (6.30m)	10' 4" (3.15m)
Maximum Floor Area: 821.5 sq. ft. (76.32 sq. m.)			

Capacities (maximum)

CONFERENCES		MEALS	
Theatre	80	Round Tables of 10	60
Classroom	40	One Large Table	32
Boardroom	32	Top Table + Sprigs	60
Hollow Rectangle	38		
U-Shape	32		

Lighting

Fluorescent/Bulbs	Bulbs
Spotlights Fixed/Moveable	Fixed
Controls in Room	Yes
Dimmers	No
Black-Out	Yes
Windows	No

Sound

Sound system fitted	Yes
Type	Stereo
Number of speakers	4
Number of mic inputs	6
Number of line inputs	1
Mixing possible	Yes
Controls in room	Yes

Power

Number of 13 amp sockets	27
3-Phase available	On request

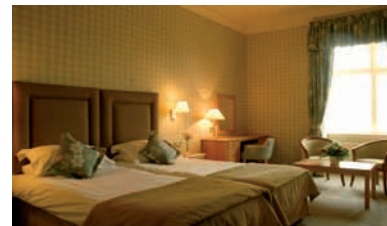
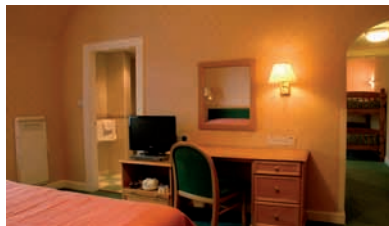
Access

Direct to outside	No
Access door size	2' 11" x 6' 9" (0.89m x 2.06m)
Delegate access	From Hotel main corridors and Ballroom

Miscellaneous

Telephone points	2
Projection room	No
Exhibitions	Yes

Leisure



Leisure

Leisure Centre with

Indoor swimming pool, Sauna, Gymnasium, Spa Bath, Steam Bath

Indoor

Badminton in ballroom (when not in use)
Table Tennis
Billiards - 2 tables
Dancing (on request),
Playroom for Children

Outdoor

Riding Stables (01721 721 325)
Pitch 'n Putt course (9 holes)
Putting Green (not in winter)
Tennis Courts - 3 courts (not in winter)
Volleyball & Basketball
Croquet

Shops

Hairdressing - Headcases at the Hydro (01721 720 906)
Gift & Souvenir Shop
Beauty Salon (01721 724 487)

Also (arranged on request)

Team building, Lectures on a variety of subjects, Special theme evenings, Highland piper and pipe band, Highland Games, Laser clay shooting, Archery, Film shows, Scottish country dancing, Fashion shows, Floral art demonstration, Chocolate Demonstration and many more.

Leisure and other facilities nearby

Peebles Golf Course (18 holes) - 1 mile away
Many other golf courses in the vicinity
Public Bowling Green - 1/2 mile away
Fishing on the River Tweed
Bicycle Trekking
7 Stanes - Glentress Forest
Peebles High Street shopping centre
Riverside walks and public parks
Dri-ski slope (South Edinburgh) - 1/2 hour by car
Edinburgh (Scotland's capital) - about 35mins by car
The Border Country - with its rolling hills, forests, rivers
Historic Houses - Traquair, Abbotsford, Floors Castle, Mellerstain, Bowhill, Neidpath Castle, Dawyck & Kailzie Gardens
Hill walks

Accommodation

Bedrooms at Peebles Hydro

	Rooms Available	Persons Accommodated
Single Bedded Rooms	32	32
Twin Bedded Rooms	74*	154
Double Bedded Rooms	22	38
Suites	2	4

TOTAL 130 228

* 25 rooms are suitable for families.

Bedrooms at the Park

	Rooms Available	Persons Accommodated
Single Bedded Rooms	4	4
Twin Bedded Rooms	8	16
Double Bedded Rooms	12	24

TOTAL 130 228